

New

Kett

SCIENCE OF SENSING
測定器のケットです。

RN-820

“SENDO MEISTER” Rice Grain Freshness Tester



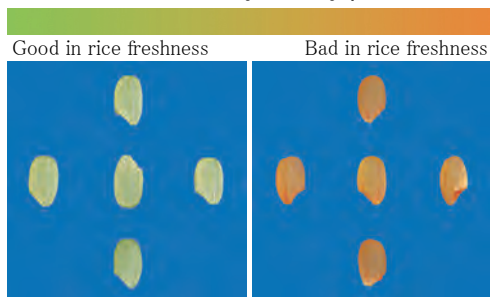
This photograph represents a simulated measurement image thus differs from an actual measurement situation. The laptop PC is not included RN-820 production package.

Kett Electric Laboratory

株式会社ケット科学研究所

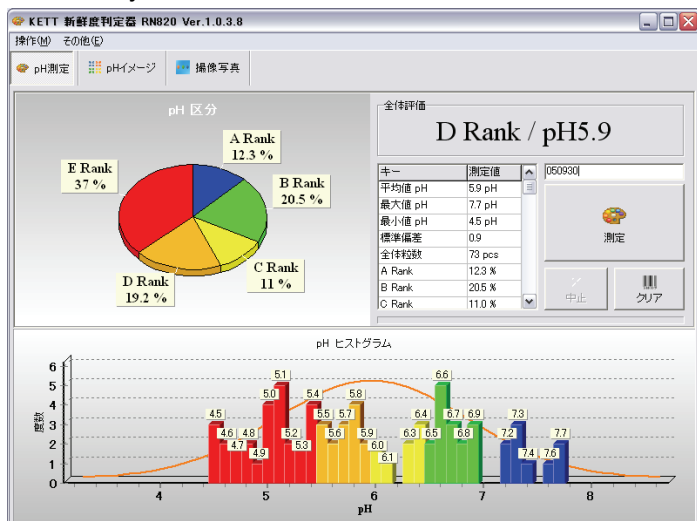
RN-820 "SENDO MEISTER" Rice Freshness Tester + Evaluation Software

Color reaction by acidity(pH) indicator



The SENDO MEISTER developed cooperatively by Kett and Japan Grain Inspection Association(J.G.I.A.). You can check the freshness data by scanning milled rice immersed in an acidity test solution tray. The data contains the colored scanned image and analyzed statistical data for each grain so that the evaluation can be standardized without asking for the need of an expert evaluation. The acidity test solution is an exclusive product of J.G.I.A.

Acidity measurement screen



Features

- * Displays the acidity of each grain in histogram and its ph grade in a circle graph.
- * Displays the acidity distribution data of the sample as "Max. Min. Ave. and Standard deviation."
- * Displays the acidity of each grain in color according to the 5-grade classification of J.G.I.A.

Standard accessories

- * Scanner, Blind mask, Petri dishes(5), Tray(3), Rice liner plate, Test solution(500ml /2 bottles), USB cable, Tweezers, Color correction plates, Template, stick, RN-820 Software(CD), etc.

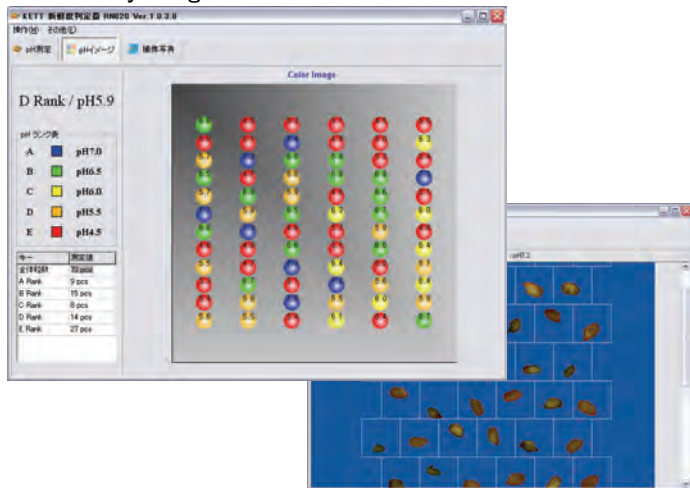
The user must supply

- * PC with the following specs :
OS: Windows XP(Home Edition or Professional) or Windows 2000 professional. Hard disk capacity : over 100MB. Disc Driver: CD-ROM driver. Cable interface: USB 1.1 or later x 2.

Options

- * A small rice milling tool "Pearlest" can polish and Whiten sample brown rice in a short time and provide good bran-free white grains that can contribute to accurate measurement.
- * Long rice Tray and Rice liner plate
RN-820 software can be used on English, Korean and Chinese PC.

Acidity image screen



株式会社ケット科学研究所

●URL <http://www.kett.co.jp/> ●E-mail sales@kett.co.jp

東京本社 東京都大田区南馬込1-8-1 〒143-8507
TEL(03)3776-1111 FAX(03)3772-3001
大阪支店 大阪市東淀川区東中島4-4-10 〒533-0033
TEL(06)6323-4581 FAX(06)6323-4585
札幌営業所 札幌市西区八軒一条西3-1-1 〒063-0841
TEL(011)611-9441 FAX(011)631-9866
仙台営業所 仙台市青葉区二日町2-15 二日町鹿島ビル 〒980-0802
TEL(022)215-6806 FAX(022)215-6809
名古屋営業所 名古屋市中村区名駅5-6-18 伊原ビル 〒450-0002
TEL(052)551-2629 FAX(052)561-5677
九州営業所 佐賀県鳥栖市布津原町14-1 布津原ビル 〒841-0053
TEL(0942)84-9011 FAX(0942)84-9012

Order or Contact us :

Kett Electric Laboratory

1-8-1 Minami-Magome Ota-ku Tokyo, 143-8507 Japan

Phone : 81-3-3776-1121

Fax : 81-3-3772-3001

e-mail : overseas@kett.co.jp

Web-site : <http://www.kett.co.jp/>

- この商品のお問い合わせは上記、またはインターネットのメールボックスへお願いいたします。URL. <http://www.kett.co.jp/> E-mail.sales@kett.co.jp
- 製品改良のため、仕様や概観の一部を予告なく変更することがあります。また、製品の色調は印刷のため、実物とは異なる場合もありますので予めご了承ください